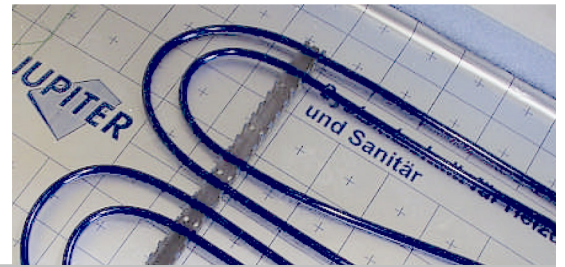


JUPITER



System STANDARD In screed underfloor heating

INTRODUCTION

System STANDARD is a traditional 'pipe embedded in screed' underfloor heating system, Using low temperature warm water, System STANDARD effectively heats buildings by radiating heat through a heated screed. JUPITER System STANDARD can be installed within 50mm anhydrite screed or 65mm sand cement screed.

Suitable for domestic and light commercial applications System STANDARD provides a cost effective heating solution for solid concrete and beam and block floor constructions.

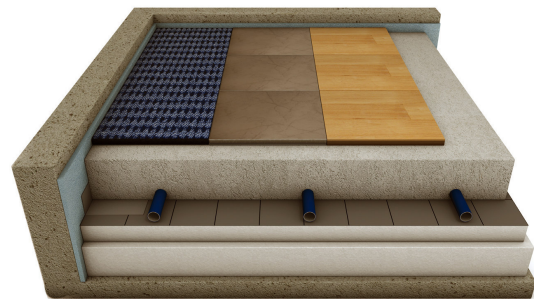
Unlike other manufacturers JUPITER supply a thin Neopor® insulation layer as part of the system which, when installed on upper floors, meets Part L and contributes to Part E Building Regulations requirements.

CONTROL

JUPITER offer Individual room control with either hard wired or state of the art wireless thermostats and low power consumption mixing valves and pumps which allow our systems to be combined with traditional radiators.

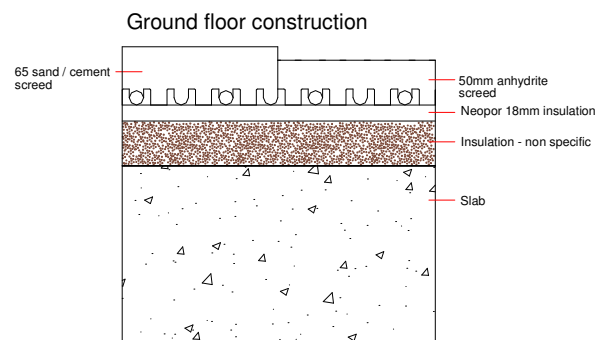
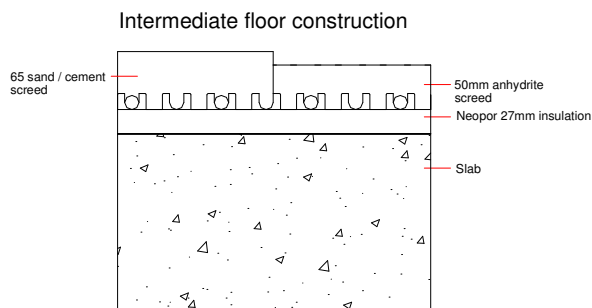
DESIGN SERVICE

We provide a design service, including heat output calculations and heating circuit layouts.



INSTALLATION

In most cases the JUPITER System STANDARD is installed either by our own engineers or by independent installers located around the UK. The system can be installed by self builders and we can issue a DVD which demonstrates all aspects of our various systems. We also supply comprehensive layout drawings as well as technical advice and after sales support.



JUPITER Heating System Ltd Chobham Surrey GU24 8DJ
T +44 (0) 1276 859 066 F +44 (0) 1276 856 894
www.jupiter-system.com info@jupiter-system.com

"...no need to screed"™